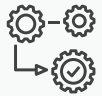


www.int4.com

Use case:

Implementing continuous testing in SAP Integration

Testing needs



IT Industry Fact:

- 35% of development cost is testing expense.
Multiply studies prove that testing account for 30-40% of development cost in general IT projects.
- For SAP integration is it about the same.
- Bug fixing requires even more testing, to ensure nothing breaks.



Business Impact:

- Failure is not an option
- Impacts relationship with partners
- Legal Consequences
- Cost money
- Support cost
- Fixing problem again
- Change management
- Lost time with business

Testing needs



Problems to be solved:

- Not enough Testing coverage, Focus more on UI and E2E testing. Middleware is ignored or remain untested
- Introduction of Agile and DevOps methodologies
- Manual testing is time consuming. Need to understand how to ensure data is correct, requires access to remote systems. Need to involve functional and technical partners
- Knowledge transfer between project and support teams

Implementing continuous testing in SAP Integration

Test automation with Int4 IFTT will enable fast pace of production deployments assuring high quality and faultlessness. Apart initial automation it requires a process that will assure that the test cases repository would be always up-to-date.

Int4 IFTT enables continuous testing by:

- **Repeater:**

Time for Creation of test cases minimized to minimum by reusing existing messages.

- **Freedom of testing:**

3rd party systems and resources are not needed to conduct SAP testing of application interfaces.

- **Shift Left:**

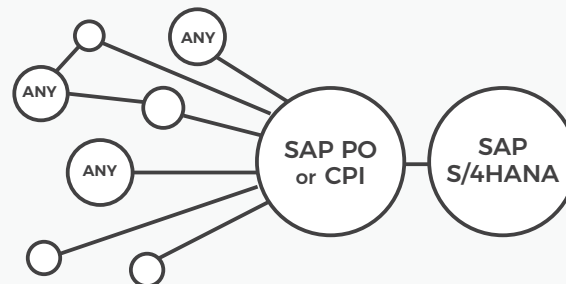
Test your change directly on development system with production data.

- **Running** in background thousands of TCs per night.

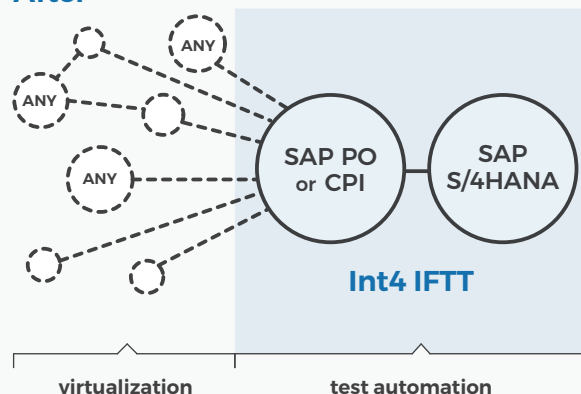
- **Integration with Ticketing systems** like SAP Solution Manager or Service Now.

- **Business oriented** – validates interface implementation in SAP PO, CPI as well as S/4HANA.

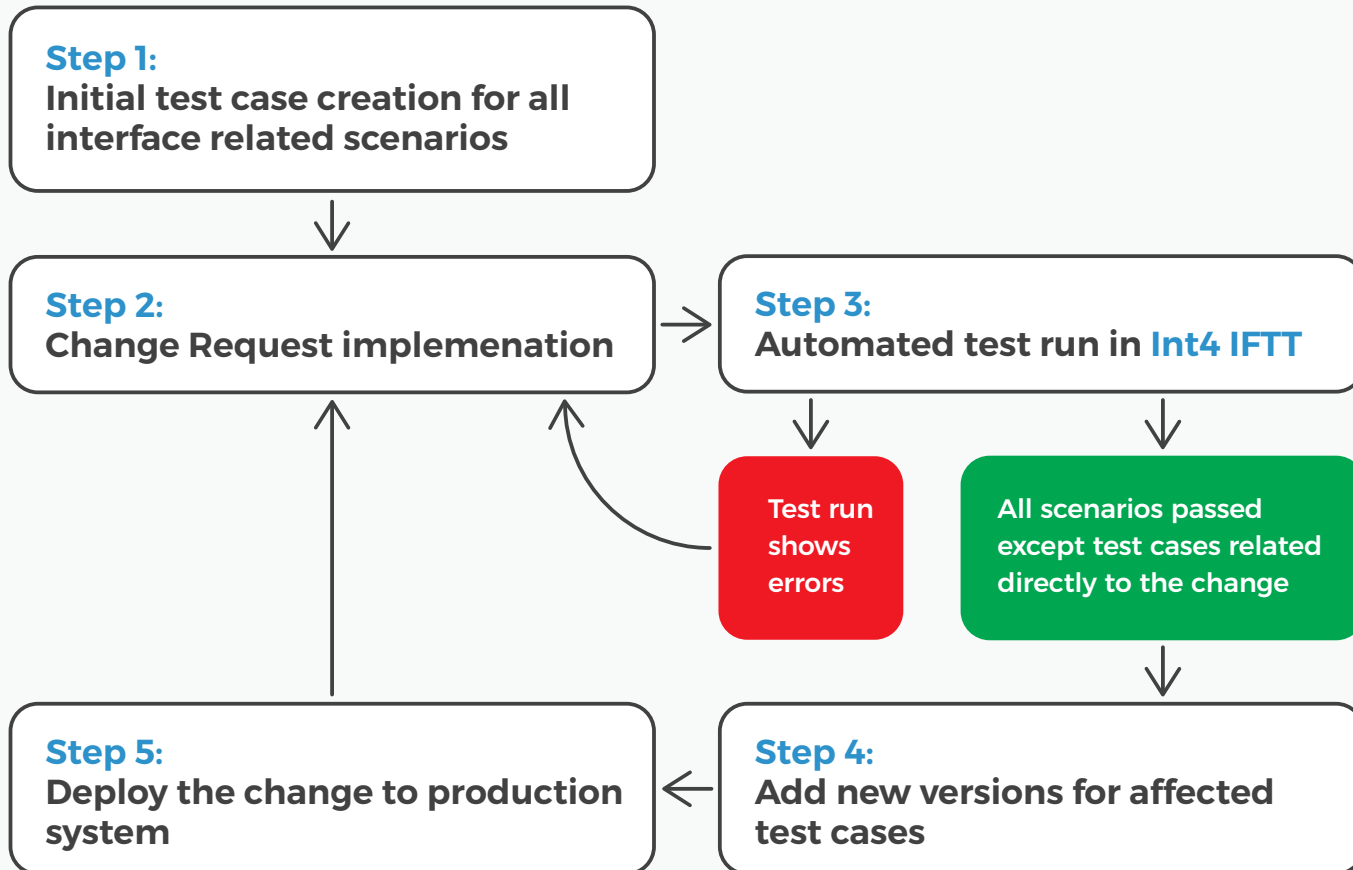
Before



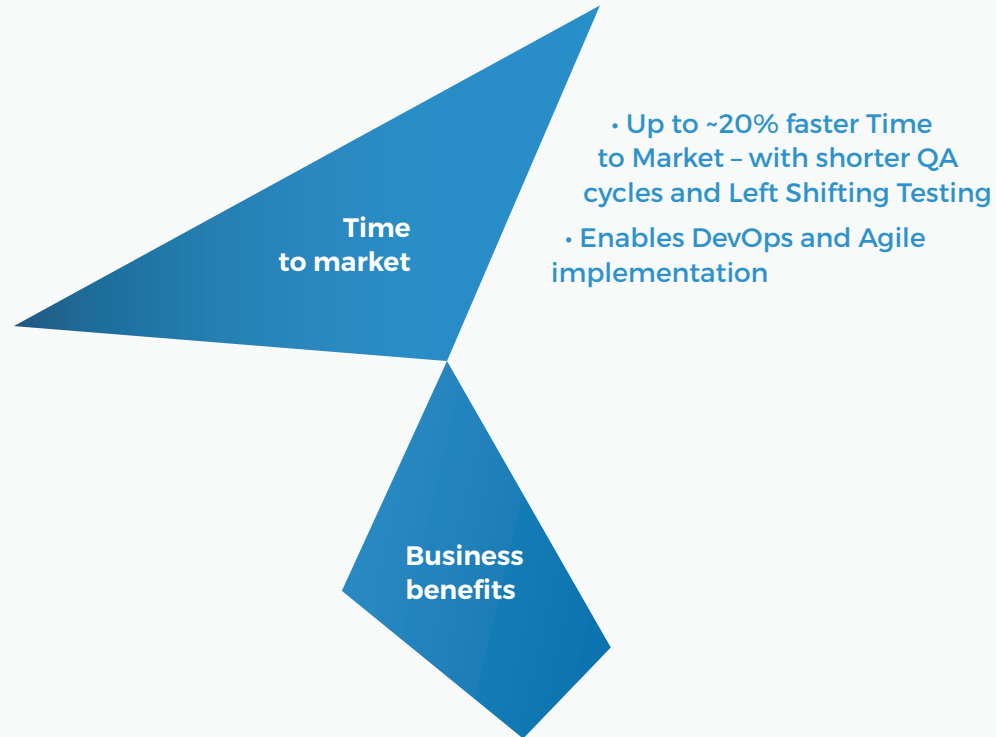
After



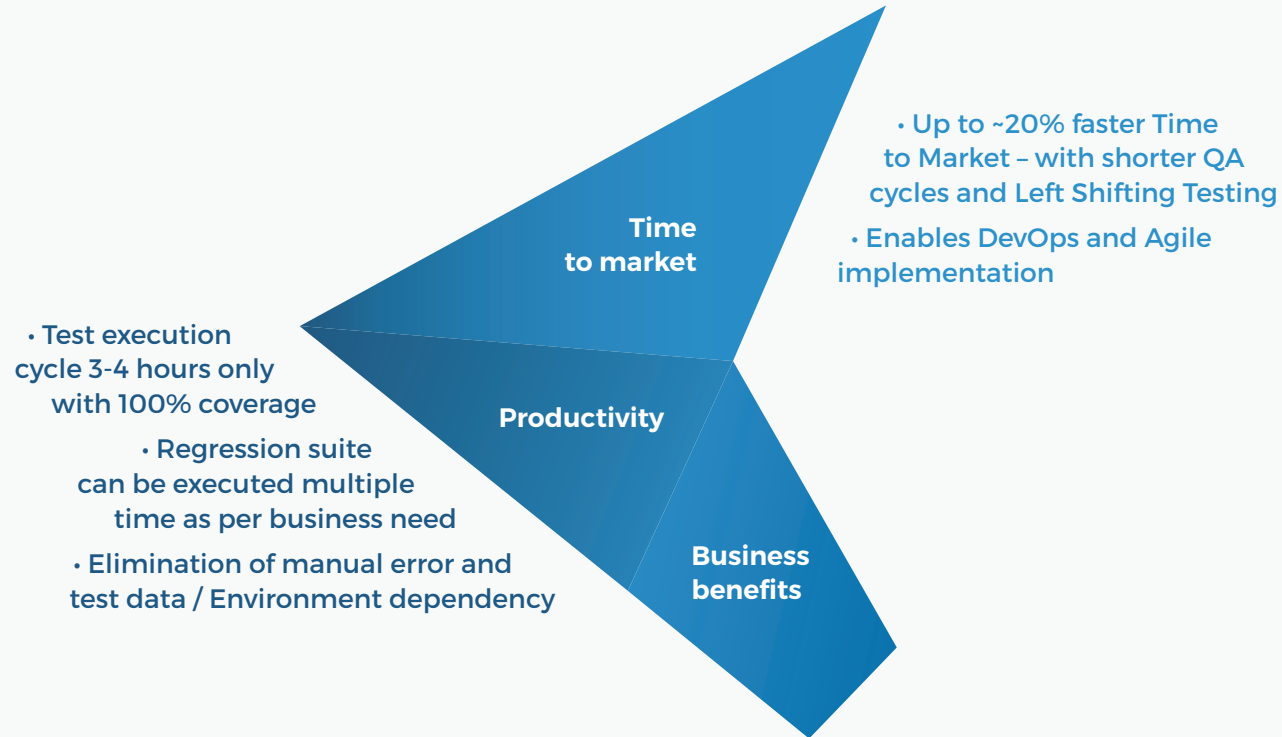
The process



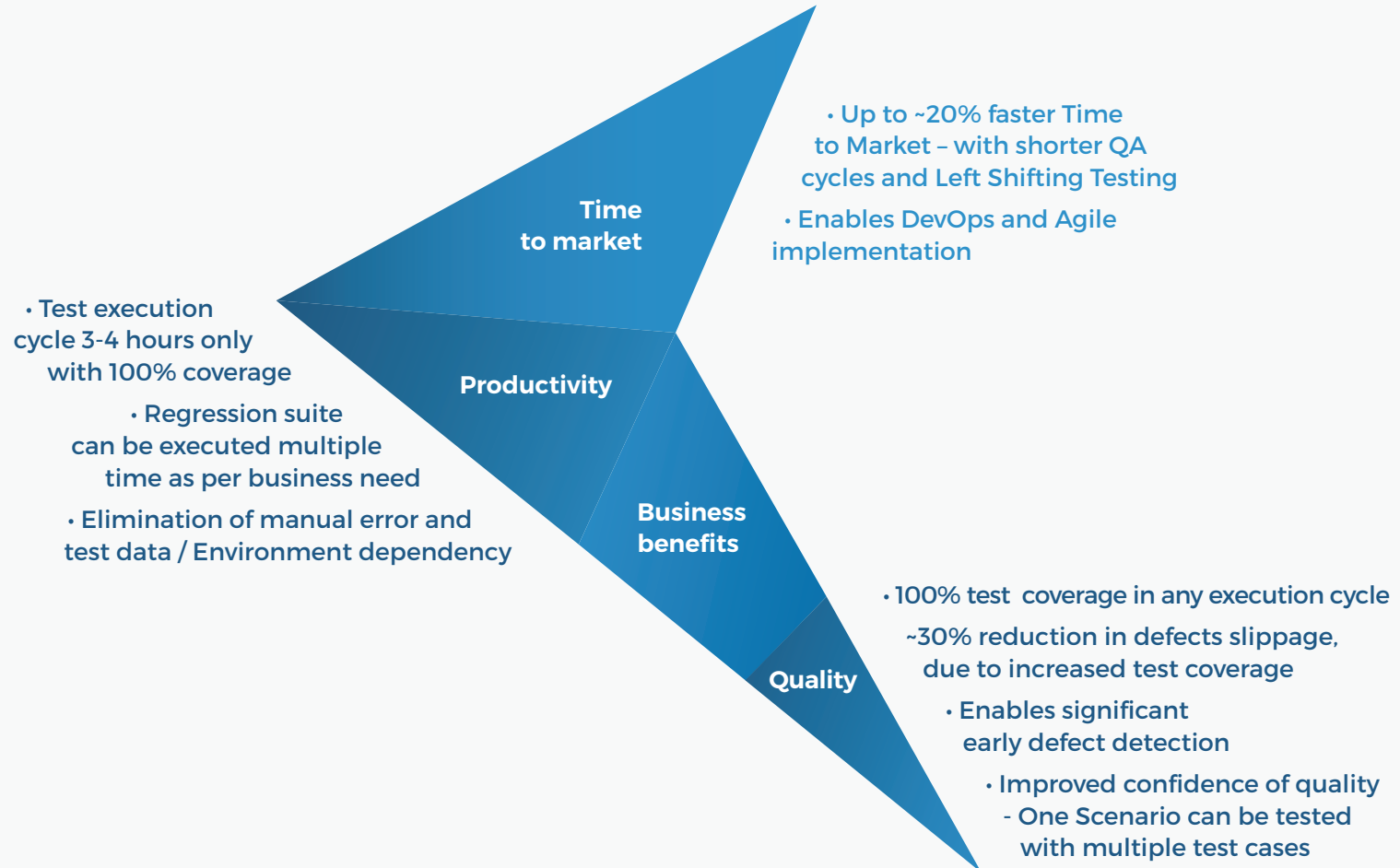
Business Value to customer



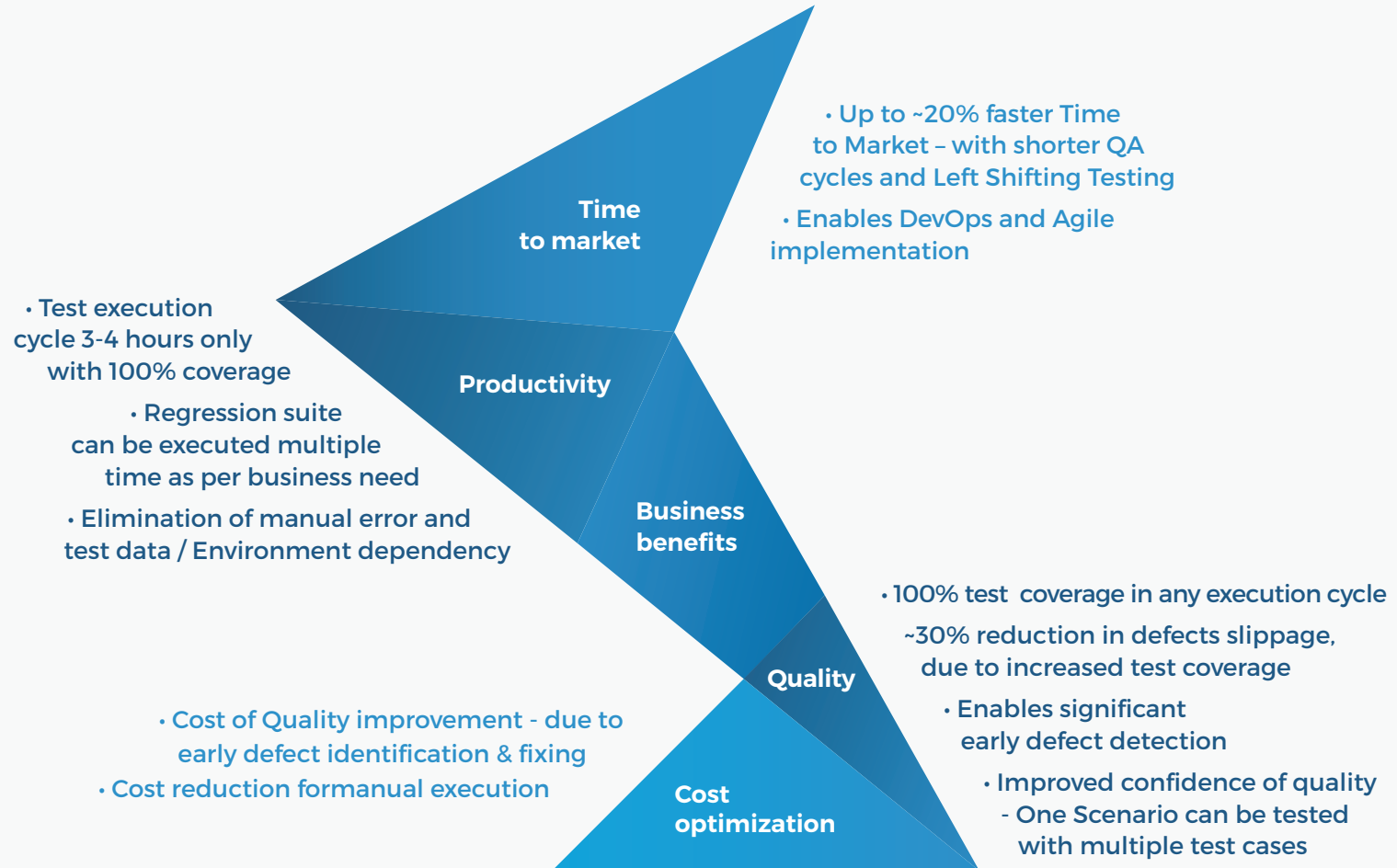
Business Value to customer



Business Value to customer



Business Value to customer



Business Value to customer

For more information visit our website:
www.int4.com/iftt